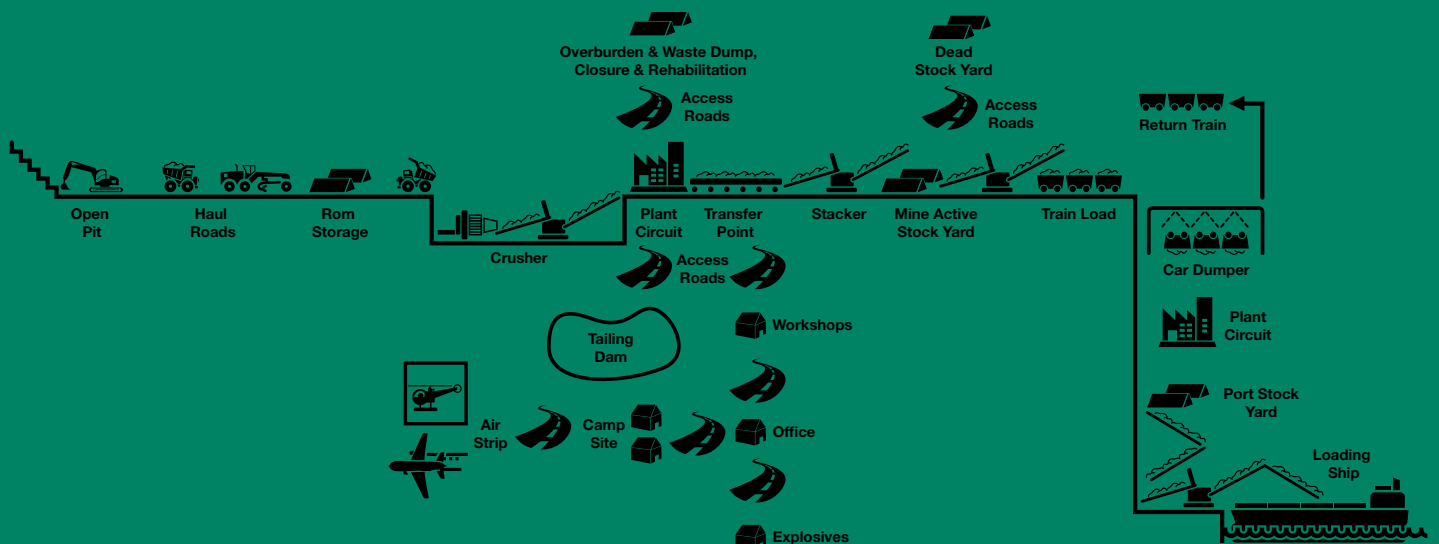




Mining Industry Solutions



Contractor Services



Contractor Services

Air tractor applications • Hydromulch Hydro seeding off road trucks
Turn Key installation dust control batching plants • Manual batch pumps
Off road dust control trucks mine site approved • Helicopter bucket applications
Dust control application to access roads, local government and mining haul roads

Rainstorm Dust Control provides a comprehensive service to clients as specialist dust control contractor for mining, local government and civil projects.

We have over 25 years operational experience, solely dedicated to Dust control services.

We have always been focused on results in the field, and value that the product technology must be matched with the application best practices. We either provide the service to complete the task using our own vehicles with powerful cannons able to reach 50m, air buckets and other specialised equipment. We are able to provide the support services for customers to apply our products at their discretion.

We are also able to supply Batch plants capable of automated injection or manual load pump systems to suit all situations and set ups.

- Turn Key installation dust control batching plants.
- Off road dust control trucks mine site approved.
- Dust control application to access roads, local government and mining haul roads.
- Design, build and install “dry fog” systems to mining plants and transhipping transfer points.
- Manual batch pumps.
- Helicopter bucket applications.
- Air tractor applications.
- Hydromulch Hydro seeding off road trucks
- Experienced dust control advisers
- Experienced dust control operators
- Mine site and civil works experienced operators Blue card
- Environmental, Health and Safety contractor accreditation Rio Tinto, BHPBilliton, FMG and Alcoa.



Eastern Australia

PO Box 334
LARA Vic 3212

☎ 03 5282 4024
📠 03 5282 4029

Western Australia

106 Maddington Road
Maddington WA 6109

☎ 08 9452 0235
📠 08 9452 3975

✉ info@rainstorm.com.au
🌐 www.rainstorm.com.au